

Davis Elem School
St Charles CUSD 303
St Charles, ILLINOIS



ILLINOIS
SCHOOL
REPORT
CARD

GRADES : K 1 2 3 4 5

State and federal laws require public school districts to release report cards to the public each year.

Starting in 2009, charter school information is included in district statistics.

STUDENTS

RACIAL/ETHNIC BACKGROUND AND OTHER INFORMATION

	White	Black	Hispanic	Asian/ Pacific Islander	Native American	Multi racial /Ethnic	Percent Low- Income	Percent Limited- English- Proficient	Percent IEP	High Sch. Dropout Rate	Chronic Truancy Rate	Mobility Rate	Attendance Rate	Total Enrollment
School	88.8	2.7	4.3	2.7	0.5	1.1	12.4	3.6	13.7		0.6	5.2	95.2	563
District	83.1	1.3	7.4	4.7	0.4	3.1	8.9	3.7	11.5		0.2	6.9	95.0	13,860
State	52.8	18.8	21.1	4.2	0.2	2.9	45.4	7.6	13.1		3.6	13.0	93.9	2,064,312

Low-income students come from families receiving public aid; live in institutions for neglected or delinquent children; are supported in foster homes with public funds; or are eligible to receive free or reduced-price lunches.

IEP Students are those students eligible to receive special education services.

Limited-English-proficient students are those students eligible for transitional bilingual programs.

Mobility rate is based on the number of times students enroll in or leave a school during the school year.

Chronic truants are students who are absent from school without valid cause for 18 or more of the last 180 school days.

INSTRUCTIONAL SETTING

PARENTAL CONTACT*	
	Percent
School	100.0
District	98.1
State	96.2

STUDENT-TO-STAFF RATIOS			
Pupil- Teacher Elementary	Pupil- Teacher Secondary	Pupil- Certified Staff	Pupil- Administrator
--	--	--	--
18.1	17.0	13.2	264.4
18.2	18.2	13.3	203.8

* Parental contact includes parent-teacher conferences, parental visits to school, school visits to home, telephone conversations, and written correspondence.

AVERAGE CLASS SIZE (as of the first school day in May)

Grades	K	1	2	3	4	5	6	7	8	9 - 12
School	23.5	24.8	24.8	28.3	24.0	21.5				
District	21.3	24.5	23.9	25.0	24.5	25.2				
State	20.7	21.2	21.4	22.1	22.6	22.8				

TIME DEVOTED TO TEACHING CORE SUBJECTS (Minutes Per Day)

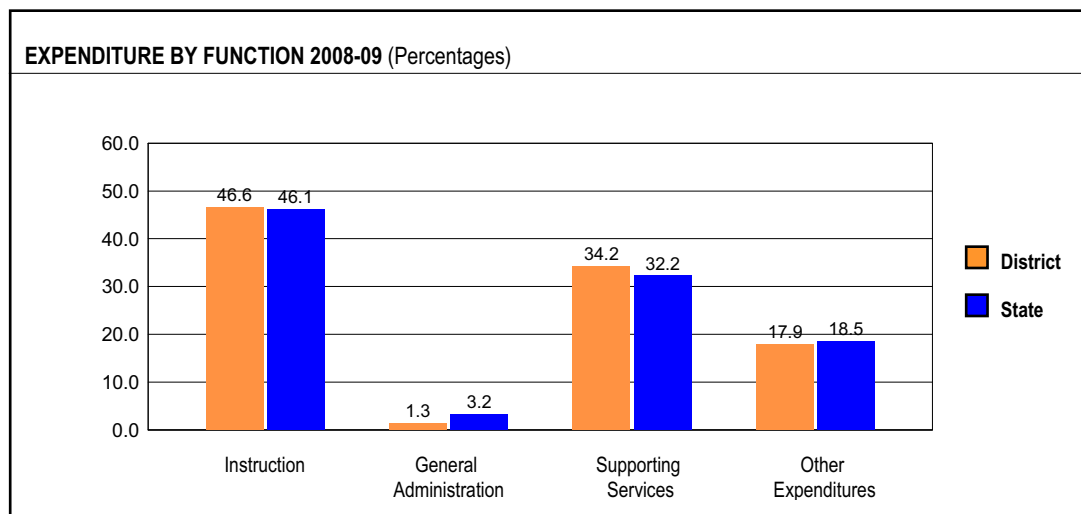
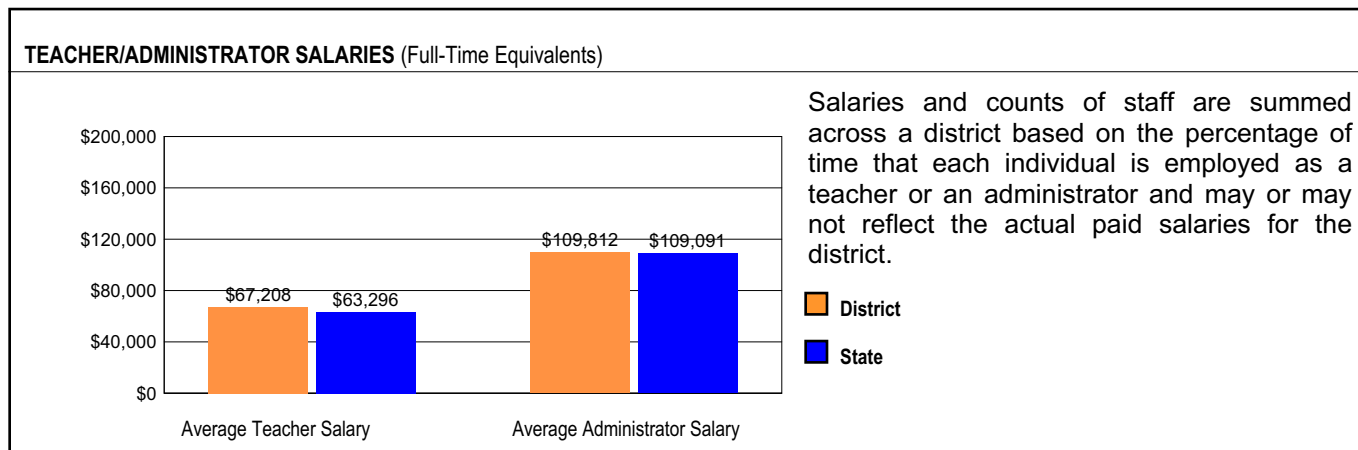
Grades	Mathematics			Science			English/Language Arts			Social Science		
	3	6	8	3	6	8	3	6	8	3	6	8
School	50			30			154			30		
District	50			30			154			30		
State	59			30			145			30		

TEACHER INFORMATION (Full-Time Equivalents)								
	White	Black	Hispanic	Asian/ Pacific Islander	Native American	Male	Female	Total Number
District	97.8	0.4	1.3	0.3	0.1	24.5	75.5	880
State	85.2	8.1	5.2	1.4	0.2	23.0	77.0	132,502

TEACHER INFORMATION (Continued)					
	Average Teaching Experience (Years)	% of Teachers with Bachelor's Degrees	% of Teachers with Master's & Above	% of Teachers with Emergency or Provisional Credentials	% of Classes Not Taught by Highly Qualified Teachers
School	--	--	--	0.0	0.0
District	11.7	29.9	70.1	0.0	0.0
State	12.7	42.2	57.4	0.5	0.7

Some teacher/administrator data are not collected at the school level.

SCHOOL DISTRICT FINANCES



REVENUE BY SOURCE 2008-09				EXPENDITURE BY FUND 2008-09			
	District	District %	State %		District	District %	State %
Local Property Taxes	\$136,657,831	82.8	58.4	Education	\$116,599,552	71.2	69.6
Other Local Funding	\$9,537,962	5.8	6.9	Operations & Maintenance	\$15,525,168	9.5	7.9
General State Aid	\$3,861,479	2.3	14.5	Transportation	\$8,623,154	5.3	3.8
Other State Funding	\$10,154,353	6.2	8.3	Debt Service	\$17,445,521	10.7	7.0
Federal Funding	\$4,812,510	2.9	11.9	Tort	\$1,359,734	0.8	1.2
TOTAL	\$165,024,135			Municipal Retirement/ Social Security	\$4,112,621	2.5	1.8
				Fire Prevention & Safety	\$0	0.0	0.8
				Site & Construction/ Capital Improvement	\$0	0.0	7.9
				TOTAL	\$163,665,750		

OTHER FINANCIAL INDICATORS				
	2007 Equalized Assessed Valuation per Pupil	2007 Total School Tax Rate per \$100	2008-09 Instructional Expenditure per Pupil	2008-09 Operating Expenditure per Pupil
District	\$265,167	4.21	\$6,131	\$11,426
State	**	**	\$6,483	\$11,197

** Due to the way Illinois school districts are configured, state averages for equalized assessed valuation per pupil and total school tax rate per \$100 are not provided.

Equalized assessed valuation includes all computed property values upon which a district's local tax rate is calculated.

Total school tax rate is a district's total tax rate as it appears on local property tax bills.

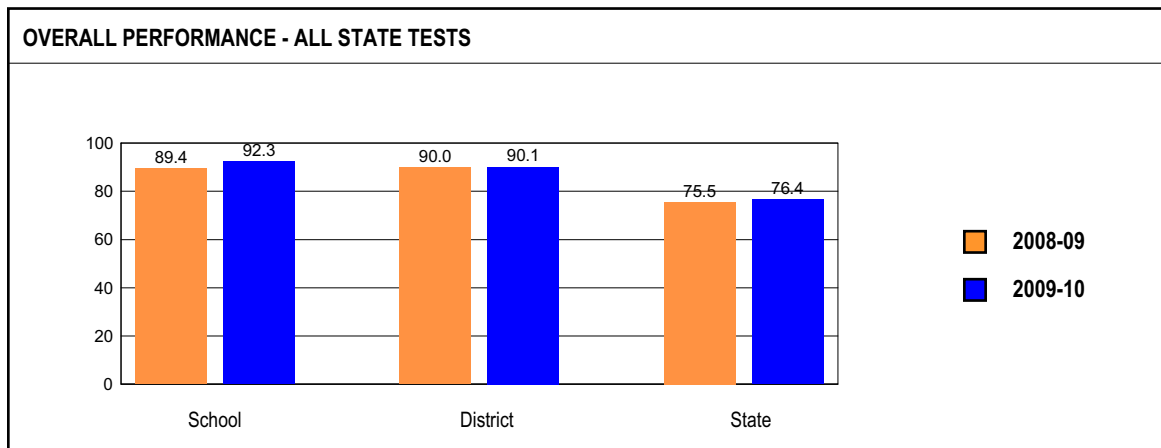
Instructional expenditure per pupil includes the direct costs of teaching pupils or the interaction between teachers and pupils.

Operating expenditure per pupil includes the gross operating cost of a school district excluding summer school, adult education, bond principal retired, and capital expenditures.

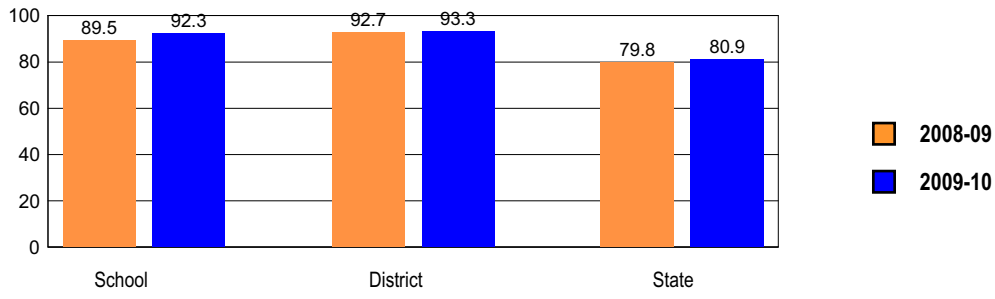
ACADEMIC PERFORMANCE

OVERALL STUDENT PERFORMANCE

These charts present the overall percentages of state test scores categorized as meeting or exceeding the Illinois Learning Standards for your school, district, and the state. They represent your school's performance in reading, mathematics, and science.

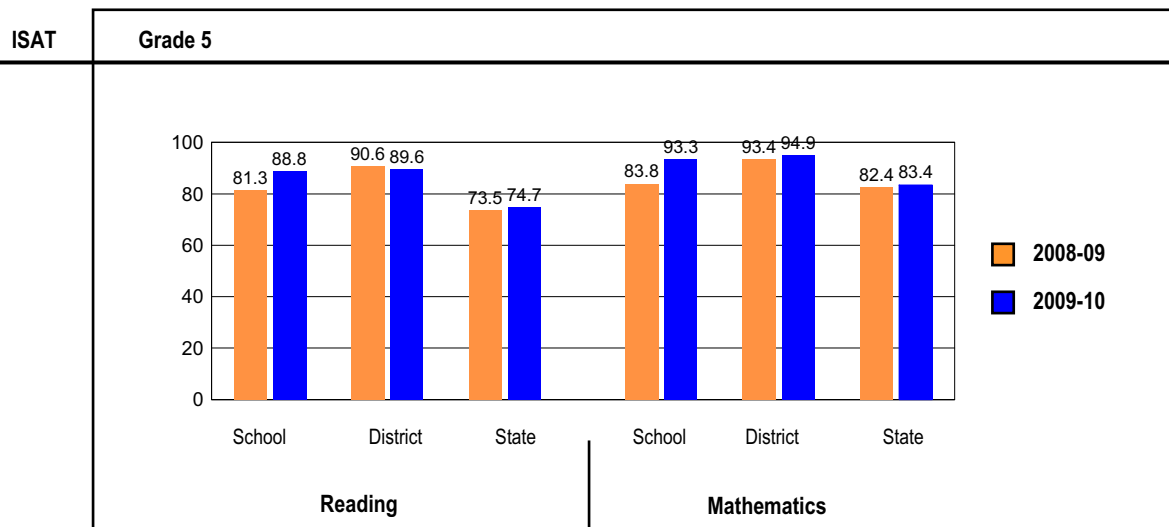
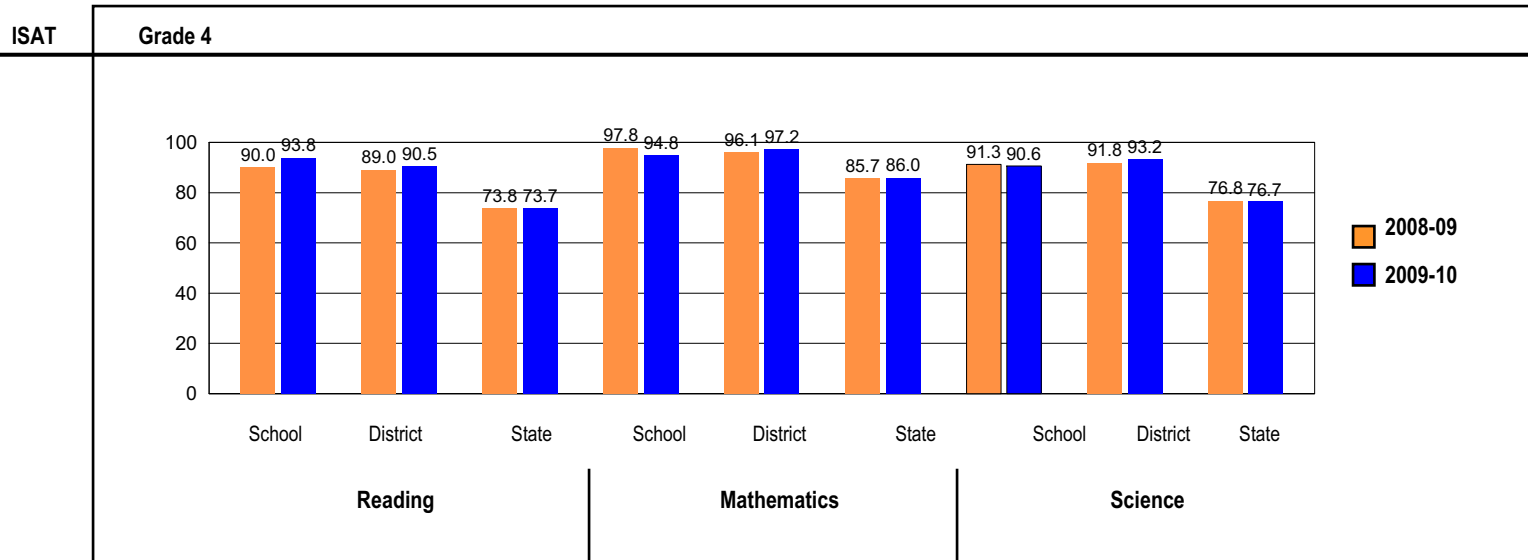
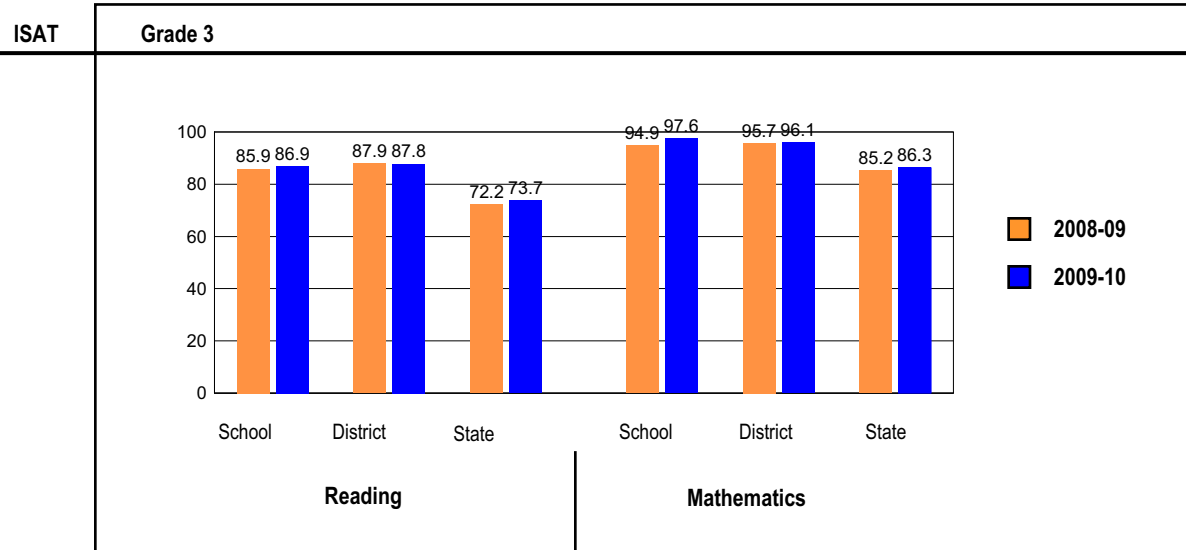


OVERALL ILLINOIS STANDARDS ACHIEVEMENT TEST (ISAT) PERFORMANCE



ISAT PERFORMANCE

These charts provide information on attainment of the Illinois Learning Standards. They show the percents of student scores meeting or exceeding Standards for the grades and subjects tested on ISAT.



PERFORMANCE ON STATE ASSESSMENTS

Federal law requires that student achievement results for reading, mathematics, and science for schools providing Title I services be reported to the general public.

The Illinois Standards Achievement Test (ISAT) is administered to students in grades 3 through 8. The Prairie State Achievement Examination (PSAE) is administered to students in grade 11. The Illinois Alternate Assessment (IAA) is administered to students with disabilities whose Individualized Education Programs (IEPs) indicate that participation in the ISAT or PSAE would not be appropriate.

Students with disabilities have an IEP (No Child Left Behind Act). An IEP is a written plan for a child with a disability who is eligible to receive special education services under the Individuals with Disabilities Education Act.

Reading and Mathematics are tested in grades 3 through 8 and 11. Science is tested in grades 4, 7, and 11.

In order to protect students' identities, test data for groups of fewer than ten students are not reported.

PERCENTAGE OF STUDENTS NOT TESTED IN STATE TESTING PROGRAMS FOR READING AND MATHEMATICS														
		Gender			Racial/Ethnic Background						LEP	Migrant	Students with Disabilities	Economically Disadvantaged
		All	Male	Female	White	Black	Hispanic	Asian/Pacific Islander	Native American	Multi racial /Ethnic				
School	*Enrollment	274	118	156	245	7	15	5	0	2	10	0	51	38
	Reading	1.5	1.7	1.3	1.6		0.0				0.0		5.9	2.6
	Mathematics	1.5	1.7	1.3	1.6		0.0				0.0		5.9	2.6
District	*Enrollment	7,567	3,896	3,671	6,364	113	516	342	27	205	245	0	1,078	675
	Reading	0.1	0.1	0.2	0.1	0.0	0.2	0.0	0.0	0.5	0.0		0.6	0.1
	Mathematics	0.1	0.1	0.2	0.1	0.0	0.2	0.0	0.0	0.5	0.0		0.6	0.1
State	*Enrollment	1,068,202	545,784	522,252	565,375	199,071	219,899	44,975	2,039	36,134	67,911	346	150,721	503,002
	Reading	0.2	0.3	0.2	0.1	0.5	0.2	0.2	0.2	0.2	0.3	0.9	0.5	0.3
	Mathematics	0.2	0.3	0.2	0.1	0.5	0.2	0.2	0.2	0.2	0.3	0.9	0.5	0.3

* Enrollment as reported during the testing windows for grades 3 - 8 and 11.

PERCENTAGE OF STUDENTS NOT TESTED IN STATE TESTING PROGRAMS FOR SCIENCE ONLY														
		Gender			Racial/Ethnic Background						LEP	Migrant	Students with Disabilities	Economically Disadvantaged
		All	Male	Female	White	Black	Hispanic	Asian/Pacific Islander	Native American	Multi racial /Ethnic				
School	*Enrollment	99	43	56	87	4	4	4	0	0	2	0	18	16
	Science	3.0	4.7	1.8	3.4								11.1	6.3
District	*Enrollment	3,185	1,628	1,557	2,667	56	227	145	16	74	79	0	423	288
	Science	0.2	0.2	0.3	0.2	0.0	0.4	0.0	0.0	1.4	0.0		1.2	0.3
State	*Enrollment	449,149	228,523	220,563	244,235	81,931	88,351	19,309	898	14,165	23,830	105	62,715	201,259
	Science	0.4	0.5	0.3	0.2	1.0	0.5	0.3	0.4	0.3	0.5	1.9	0.9	0.6

* Enrollment as reported during the testing windows for grades 4, 7, and 11.

ILLINOIS STANDARDS ACHIEVEMENT TEST (ISAT)

The following tables show the percentages of student scores in each of four performance levels. These levels were established with the help of Illinois educators who teach the grade levels and learning areas tested. Due to rounding, the sum of the percentages in the four performance levels may not always equal 100.

- Level 1 -- Academic Warning - Student work demonstrates limited knowledge and skills in the subject. Because of major gaps in learning, students apply knowledge and skills ineffectively.
- Level 2 -- Below Standards - Student work demonstrates basic knowledge and skills in the subject. However, because of gaps in learning, students apply knowledge and skills in limited ways.
- Level 3 -- Meets Standards - Student work demonstrates proficient knowledge and skills in the subject. Students effectively apply knowledge and skills to solve problems.
- Level 4 -- Exceeds Standards - Student work demonstrates advanced knowledge and skills in the subject. Students creatively apply knowledge and skills to solve problems and evaluate the results.

Grade 3

Grade 3 - All

Levels	Reading				Mathematics			
	1	2	3	4	1	2	3	4
School	0.0	13.1	46.4	40.5	0.0	2.4	48.8	48.8
District	1.5	10.7	40.4	47.4	0.4	3.5	36.6	59.5
State	5.4	20.9	45.9	27.8	2.9	10.7	44.7	41.7

Grade 3 - Gender

Levels	Reading				Mathematics				
	1	2	3	4	1	2	3	4	
Male	School	0.0	10.3	53.8	35.9	0.0	0.0	46.2	53.8
	District	2.3	12.1	42.4	43.2	0.2	3.5	35.3	61.0
	State	6.6	22.7	45.6	25.1	3.1	10.6	43.2	43.0
Female	School	0.0	15.6	40.0	44.4	0.0	4.4	51.1	44.4
	District	0.6	9.3	38.4	51.7	0.6	3.6	37.9	57.9
	State	4.1	19.1	46.2	30.7	2.7	10.9	46.2	40.2

Grade 3 - Racial/Ethnic Background

Levels	Reading				Mathematics				
	1	2	3	4	1	2	3	4	
White	School	0.0	9.3	45.3	45.3	0.0	2.7	42.7	54.7
	District	1.4	9.7	38.7	50.2	0.5	3.6	33.8	62.1
	State	2.2	11.9	46.6	39.3	1.0	5.3	39.0	54.7
Black	School								
	District	0.0	0.0	70.0	30.0	0.0	0.0	70.0	30.0
	State	9.8	31.1	46.2	12.9	7.4	20.0	51.9	20.6
Hispanic	School								
	District	2.8	26.4	54.2	16.7	0.0	2.8	69.0	28.2
	State	9.7	35.1	44.2	11.0	4.1	16.7	54.3	24.9
Asian/Pacific Islander	School								
	District	2.1	8.3	43.8	45.8	0.0	2.1	29.2	68.8
	State	1.7	10.0	43.5	44.9	0.9	3.5	27.3	68.4
Native American	School								
	District								
	State	3.8	19.8	48.3	28.1	2.3	8.0	46.8	43.0
Multiracial/Ethnic	School								
	District	0.0	10.5	42.1	47.4	0.0	5.3	42.1	52.6
	State	3.7	17.3	48.2	30.7	2.1	9.0	45.8	43.1

Grade 3 - Students with Disabilities

Levels	Reading				Mathematics				
	1	2	3	4	1	2	3	4	
IEP	School	0.0	14.3	50.0	35.7	0.0	7.1	42.9	50.0
	District	6.9	28.0	37.1	28.0	2.3	12.6	43.1	42.0
	State	18.9	36.6	33.4	11.1	9.3	22.4	46.7	21.7
Non-IEP	School	0.0	12.9	45.7	41.4	0.0	1.4	50.0	48.6
	District	0.4	7.2	41.1	51.4	0.0	1.6	35.3	63.1
	State	3.4	18.6	47.7	30.2	2.0	9.1	44.4	44.5

Grade 3 - Economically Disadvantaged

Levels	Reading				Mathematics				
	1	2	3	4	1	2	3	4	
Free/Reduced Price Lunch	School	0.0	27.3	36.4	36.4	0.0	0.0	90.9	9.1
	District	7.1	27.3	49.5	16.2	1.0	11.2	67.3	20.4
	State	9.0	30.9	46.4	13.7	5.0	16.8	52.7	25.5
Not Eligible	School	0.0	11.0	47.9	41.1	0.0	2.7	42.5	54.8
	District	0.9	9.0	39.5	50.7	0.3	2.7	33.4	63.6
	State	1.6	10.4	45.3	42.7	0.8	4.3	36.2	58.7

Grade 4**Grade 4 - All**

Levels	Reading				Mathematics				Science			
	1	2	3	4	1	2	3	4	1	2	3	4
School	0.0	6.3	39.6	54.2	0.0	5.2	49.0	45.8	1.0	8.3	59.4	31.3
District	0.1	9.4	36.5	54.0	0.0	2.8	43.2	54.0	0.1	6.7	66.6	26.6
State	1.2	25.1	44.8	28.9	1.1	12.9	57.7	28.2	2.8	20.5	59.6	17.0

Grade 4 - Gender

Levels	Reading				Mathematics				Science				
	1	2	3	4	1	2	3	4	1	2	3	4	
Male	School	0.0	4.9	36.6	58.5	0.0	0.0	43.9	56.1	0.0	4.9	56.1	39.0
	District	0.2	12.3	36.0	51.6	0.0	2.9	41.4	55.7	0.0	6.6	62.9	30.5
	State	1.7	27.7	43.9	26.7	1.3	13.3	56.1	29.3	3.2	20.1	57.4	19.4
Female	School	0.0	7.3	41.8	50.9	0.0	9.1	52.7	38.2	1.8	10.9	61.8	25.5
	District	0.0	6.4	37.0	56.7	0.0	2.7	45.2	52.1	0.2	6.7	70.6	22.5
	State	0.7	22.3	45.7	31.2	0.9	12.5	59.5	27.1	2.5	21.0	62.0	14.6

Grade 4 - Racial/Ethnic Background

Levels	Reading				Mathematics				Science				
	1	2	3	4	1	2	3	4	1	2	3	4	
White	School	0.0	4.8	35.7	59.5	0.0	4.8	45.2	50.0	1.2	4.8	59.5	34.5
	District	0.0	7.3	34.1	58.6	0.0	2.3	39.9	57.8	0.1	5.0	65.4	29.4
	State	0.5	15.1	45.0	39.4	0.5	6.6	54.4	38.5	0.8	10.2	63.7	25.4
Black	School	0.0	15.8	57.9	26.3	0.0	10.0	75.0	15.0	0.0	40.0	55.0	5.0
	District	2.3	40.9	44.4	12.4	2.7	25.7	61.3	10.3	7.2	39.9	49.2	3.7
	State												
Hispanic	School	1.6	31.3	45.3	21.9	0.0	7.7	69.2	23.1	0.0	15.4	80.0	4.6
	District	2.1	38.8	45.3	13.9	1.5	18.7	65.5	14.2	4.5	31.2	58.6	5.7
	State												
Asian/Pacific Islander	School	0.0	11.1	48.9	40.0	0.0	2.2	40.0	57.8	0.0	6.7	71.1	22.2
	District	0.4	10.7	39.6	49.2	0.5	4.2	41.2	54.1	1.3	9.1	57.7	31.9
	State												
Native American	School												
	District	0.7	21.7	44.9	32.6	0.4	13.0	59.8	26.8	3.3	17.4	58.7	20.7
	State												
Multiracial/Ethnic	School												
	District	0.0	12.8	48.7	38.5	0.0	2.6	59.0	38.5	0.0	10.3	71.8	17.9
	State	0.5	21.0	47.2	31.2	0.6	11.4	59.9	28.0	1.7	17.2	63.0	18.1

Grade 4 - Students with Disabilities

Levels	Reading				Mathematics				Science				
	1	2	3	4	1	2	3	4	1	2	3	4	
IEP	School	0.0	25.0	62.5	12.5	0.0	18.8	62.5	18.8	6.3	25.0	56.3	12.5
	District	0.0	30.8	42.4	26.7	0.0	11.6	59.3	29.1	0.6	18.6	69.2	11.6
	State	5.9	54.4	29.8	10.0	5.3	31.9	51.6	11.2	8.1	35.8	48.6	7.4
Non-IEP	School	0.0	2.5	35.0	62.5	0.0	2.5	46.3	51.3	0.0	5.0	60.0	35.0
	District	0.1	4.9	35.2	59.7	0.0	1.0	39.9	59.1	0.0	4.2	66.1	29.7
	State	0.5	20.6	47.1	31.8	0.5	10.0	58.7	30.9	2.0	18.2	61.3	18.5

Grade 4 - Economically Disadvantaged

Levels	Reading				Mathematics				Science				
	1	2	3	4	1	2	3	4	1	2	3	4	
Free/Reduced Price Lunch	School	0.0	6.7	40.0	53.3	0.0	0.0	66.7	33.3	0.0	13.3	53.3	33.3
	District	0.9	27.5	47.7	23.9	0.0	6.4	74.3	19.3	0.0	22.0	71.6	6.4
	State	2.1	37.9	45.7	14.2	1.9	20.4	63.9	13.8	5.0	32.3	56.6	6.2
Not Eligible	School	0.0	6.2	39.5	54.3	0.0	6.2	45.7	48.1	1.2	7.4	60.5	30.9
	District	0.0	7.2	35.1	57.7	0.0	2.3	39.4	58.2	0.1	4.8	66.0	29.1
	State	0.3	12.3	43.9	43.5	0.3	5.4	51.6	42.6	0.7	8.8	62.7	27.8

Grade 5**Grade 5 - All**

Levels	Reading				Mathematics			
	1	2	3	4	1	2	3	4
School	0.0	11.2	38.2	50.6	0.0	6.7	64.0	29.2
District	0.0	10.4	36.3	53.3	0.1	5.0	58.3	36.6
State	0.3	25.0	44.7	30.0	0.3	16.3	65.8	17.6

Grade 5 - Gender

Levels	Reading				Mathematics				
	1	2	3	4	1	2	3	4	
Male	School	0.0	16.7	30.6	52.8	0.0	11.1	58.3	30.6
	District	0.0	12.8	38.8	48.4	0.2	5.8	56.4	37.6
	State	0.4	28.5	44.1	27.0	0.4	17.1	64.4	18.0
Female	School	0.0	7.5	43.4	49.1	0.0	3.8	67.9	28.3
	District	0.0	7.9	33.7	58.4	0.0	4.2	60.2	35.6
	State	0.2	21.3	45.5	33.1	0.3	15.4	67.3	17.1

Grade 5 - Racial/Ethnic Background

Levels	Reading				Mathematics				
	1	2	3	4	1	2	3	4	
White	School	0.0	11.0	36.6	52.4	0.0	6.1	63.4	30.5
	District	0.0	8.0	36.6	55.3	0.1	4.0	57.6	38.3
	State	0.2	14.8	45.1	40.0	0.1	9.1	67.0	23.8
Black	School								
	District	0.0	18.8	12.5	68.8	0.0	12.5	75.0	12.5
	State	0.6	41.8	43.4	14.2	0.9	32.2	61.2	5.7
Hispanic	School								
	District	0.0	37.3	43.3	19.4	0.0	22.4	64.2	13.4
	State	0.4	38.6	45.9	15.0	0.4	22.5	69.4	7.7
Asian/Pacific Islander	School								
	District	0.0	11.4	27.3	61.4	0.0	0.0	52.3	47.7
	State	0.0	10.8	38.4	50.8	0.1	4.8	51.1	44.1
Native American	School								
	District								
	State	0.0	24.9	44.6	30.5	0.0	13.4	70.6	16.0
Multiracial/Ethnic	School								
	District	0.0	13.9	33.3	52.8	0.0	0.0	61.1	38.9
	State	0.3	21.4	47.1	31.2	0.2	14.6	68.6	16.5

Grade 5 - Students with Disabilities

Levels	Reading				Mathematics				
	1	2	3	4	1	2	3	4	
IEP	School	0.0	35.3	52.9	11.8	0.0	29.4	70.6	0.0
	District	0.0	41.7	38.7	19.6	0.6	22.2	67.1	10.2
	State	1.6	60.4	29.9	8.1	1.6	42.9	50.5	4.9
Non-IEP	School	0.0	5.6	34.7	59.7	0.0	1.4	62.5	36.1
	District	0.0	4.5	35.8	59.7	0.0	1.8	56.6	41.6
	State	0.1	19.5	47.1	33.4	0.1	12.1	68.2	19.5

Grade 5 - Economically Disadvantaged

Levels	Reading				Mathematics			
	1	2	3	4	1	2	3	4
Free/Reduced Price Lunch								
School	0.0	18.2	45.5	36.4	0.0	9.1	63.6	27.3
District	0.0	30.2	39.6	30.2	0.0	20.8	63.5	15.6
State	0.5	38.3	45.8	15.4	0.6	25.5	66.6	7.4
Not Eligible								
School	0.0	10.3	37.2	52.6	0.0	6.4	64.1	29.5
District	0.0	8.4	36.0	55.6	0.1	3.4	57.7	38.7
State	0.1	12.2	43.8	43.9	0.1	7.4	65.1	27.4

2010 ADEQUATE YEARLY PROGRESS (AYP) Status Report

Is this school making Adequate Yearly Progress (AYP)?	Yes
Is this school making AYP in Reading?	Yes
Is this school making AYP in Mathematics?	Yes

Has this school been identified for School Improvement according to the AYP specifications of the federal No Child Left Behind Act?	No
2010-11 Federal Improvement Status	
2010-11 State Improvement Status	

	Percent Tested on State Tests				Percent Meeting/Exceeding Standards *						Other Indicators			
	Reading		Mathematics		Reading			Mathematics			Attendance Rate		Graduation Rate	
	%	Met AYP	%	Met AYP	%	Safe Harbor Target **	Met AYP	%	Safe Harbor Target **	Met AYP	%	Met AYP	%	Met AYP
State AYP Minimum Target	95.0		95.0		77.5			77.5			91.0		80.0	
All	98.5	Yes	98.5	Yes	90.5		Yes	95.5		Yes	95.2	Yes		
White	98.4	Yes	98.4	Yes	92.0		Yes	95.8		Yes				
Black														
Hispanic														
Asian/Pacific Islander														
Native American														
Multiracial /Ethnic														
LEP														
Students with Disabilities	94.1	Yes	94.1	Yes	76.1		Yes	82.6		Yes				
Economically Disadvantaged														

Four Conditions Are Required For Making Adequate Yearly Progress (AYP):

1. At least 95% tested in reading and mathematics for every student group. If the current year participation rate is less than 95%, this condition may be met if the average of the current and preceding year rates is at least 95%, or if the average of the current and two preceding years is at least 95%. Only actual participation rates are printed. If the participation rate printed is less than 95% and yet this school makes AYP, it means that the 95% condition was met by averaging.
2. At least 77.5% meeting/exceeding standards in reading and mathematics for every group. For any group with less than 77.5% meeting/exceeding standards, a 95% confidence interval was applied. Subgroups may meet this condition through Safe Harbor provisions. ***
3. At least 91% attendance rate for non-high schools and at least 80% graduation rate for high schools.

* Includes only students enrolled as of 05/01/2009.

** Safe Harbor Targets of 77.5% or above are not printed.

*** Subgroups with fewer than 45 students are not reported. Safe Harbor only applies to subgroups of 45 or more. In order for Safe Harbor to apply, a subgroup must decrease by 10% the percentage of scores that did not meet state standards from the previous year plus meet the other indicators (attendance rate for non-high schools and graduation rate for high schools) for the subgroup. For subgroups that do not meet their Safe Harbor Targets, a 75% confidence interval is applied. Safe Harbor allows schools an alternate method to meet subgroup minimum targets on achievement.

This “School Report Card” has been compiled by the Illinois State Board of Education as a means by which school districts communicate local and statewide information to the public. The *No Child Left Behind Act of 2001 (NCLBA)* required states to establish annual achievement targets which are used to calculate Annual Yearly Progress (AYP). The purpose of this “School Report Card” is to communicate the school’s and district’s performance on the annual targets. In 2010, Davis School achieved Adequate Yearly Progress (AYP) under the Federal No Child Left Behind Act. Davis Elementary School is committed to providing students with a learning community that helps them develop into life long learners. During the 2010-2011 school year the staff, parents, and administration of Davis School will continue to work collaboratively to improve instruction and student performance. This report indicates our findings upon which our School Improvement Plan and goals are based for the current school year.

Findings for School Improvement Plan

Our School Improvement Team has analyzed data from many different sources to determine the academic goals for Davis School. Our analysis included data from the Illinois Standards Achievement Tests (ISAT), Illinois Snapshot of Early Literacy (ISEL), Tungsten Benchmark Assessments, quarterly student report cards, as well as district and class assessments. ISAT results reported that at grade three 88% of our students met or exceeded standards in reading, 75% in writing and 98% in math. In grade four 96% of our students met or exceeded standards in reading and 96% in math. In addition, 91.5% of all fourth grade students met or exceeded state standards in science. At grade five, 88% of our students met or exceeded standards in reading, 76% in writing and 94% in math. These scores provided evidence that our school improvement efforts have resulted in meeting our stated goals and resulted in increased student achievement. Our school improvement plans and goals are based on all of the data that has been collected. New methods of data collection will provide us with more information about student progress.

Goals for the 2010-2011 School Year

The Davis School Improvement Team developed both academic and affective goals. Our Academic Goals are to improve the total percentage of students in grades 3, 4, and 5 scoring a Meets or Exceeds on ISAT state standards in Reading by two percentage points and by one percentage point in Math. Our school improvement teams are developing action plans in each grade level based upon data indicators. All teachers are also using the Diagnostic Reading Assessment (DRA2) with all students to provide critical information on our students’ reading skills. In addition, teachers will participate in regular Professional Learning Community meetings to develop essential learning for students, analyze student work/performance, improve instructional strategies, and deliver critical interventions designed to improve student learning. Our school is also continuing the Social Decision Making and Problem Solving program. This is a comprehensive, school-wide program designed to meet the Illinois Social and Emotional State Standards.

Contact Information

Our team wants to know what you think. Please e-mail your comments and ideas to Rick Windle: Richard.windle@d303.org or write me at Davis Elementary School, 201 S. Seventh Street, St.Charles, IL 60174. Community Unit School District 303 also has a web site at www.d303.org. Log onto that site for links to staff e-mail and additional information about the school district.