

East High School

Orange & Black Bulletin

January 14, 2019



ATTENTION EAST PARENTS - JOIN PTO

The PTO is looking for volunteers to fill open positions for the 2018-19 school year. There are many great committees and opportunities to choose from! Follow this link to volunteer: [2018/2019 STCE PTO Volunteers](https://www.facebook.com/stcesaintspto/)

POST PROM 2019—YOU ARE NEEDED

Follow St. Charles East PTO on Facebook <https://www.facebook.com/stcesaintspto/> to learn more about PTO opportunities and the biggest parent driven event POST PROM. All grade level parents can be involved to keep this successful Prom night event available to our students!

SAVE THE DATE – ISO BIG GAME



Attention ISO Superfans – The annual “BIG Game” where ISO takes on the varsity girls and boys basketball teams is on Wednesday, January 23, 2019 at 6:00 p.m. in the Main Gym. There will be a 50/50 raffle, concessions, t-shirt sales and more. Let’s pack the stands!

ATTENTION SOPHOMORES, JUNIORS, SENIORS: HELP WANTED



Are you interested in the “Saints Helping Hawks” Tutoring Program? We are in need of more tutors for Tuesdays and Thursdays at Wredling from 3:15-4:30 p.m. Contracts are available in the Student Activities Office. You’ll need Mrs. Dandre’s signature on the contract before you can start to help at Wredling. Stop by the Student Activities Office to read over a contract and join as a tutor. The middle school students really need us—can you help?

LEADERSHIP STUDIES

Are you a junior? Would you consider yourself a leader? Are you a strong student who wants to learn more about leadership philosophy and participate in hands on practice in a positive environment? Consider Leadership Studies as an option for your Senior English class. Pick up an application from your English teacher or at the LRC circulation desk and submit the application by Tuesday, January 22, 2019. Contact Mr. Biernacki for any questions you have about the course.

HOMEWORK CLUB



How are your grades? Join Homework Club for help on assignments in all subject areas! The club is open 2:30-3:45PM on Tuesdays, Wednesdays (non Early Release) and Thursdays. Pick up an application from Mrs. Dandre in the Student Activities Office. See your Dean or Counselor for more information. See you soon!



CARDIO CAGE

The cardio cage will be open 2:45-4:00PM Monday through Thursday every week. If you have any questions, feel free to ask Mr. Cole or Mr. Libberton. So come out and work-out!

FITNESS CENTER



Want to get big and strong in the sweeeeeet new fitness center? The fitness center will be open on school days from 2:45 - 3:45PM Monday through Friday. If you have any questions, feel free to ask Mr. Potter or Mr. Pollack.

ANDERSON ANIMAL SHELTER—DONATION DRIVE

See the attached flier & wish-lists for Anderson Animal Shelter in this bulletin. Our donation drive will run from January 7 – January 17, 2019. There will be donation boxes in the main foyer (Door #1), the Main Commons and the LRC. Thanks in advance for your continued generosity!

RYLA 2019

Interested in working on your leadership skills? Enjoy team building activities with other high school students? Come to the Rotary Club's RYLA (Rotary Youth Leadership Awards) conference this spring. St. Charles Rotary Club is sponsoring 3 students (Freshmen to Seniors) to attend the conference. See the application attached in this bulletin and pick up a flier with more details in the Student Activities Office. Applications are due back to Mrs. Dandre by Monday, January 28, 2019.



Competition is quickly approaching! If you missed our last meeting, stop by the FACS office to see your advisor for a competition checklist. As always, if you need help with your competition event see Ms. Brenner, Mrs. Gartner, or Ms. Rosignal.

EXAM WEEK INFORMATION – STUDY HALLS

Full period study halls will meet in their regularly scheduled locations. All lunch/study halls will meet in the Main Commons. Check-in with your study hall teacher. During exams, St. Charles East is still a closed campus. Students cannot leave campus and come back. If a student begins or ends the final exam day with a study hall, attendance in study hall is optional. Parents do not need to call the Attendance office to excuse their student. The student will automatically be excused. Students will only be permitted in the halls during passing periods. Therefore, students arriving in the middle of a testing period will be directed to the Main Commons.

EXAM WEEK INFORMATION – BOOK ROOM

Please remember to turn in your first semester books so that you may check out your textbooks for second semester. The book room is open all week for your convenience. Don't forget-- someone may need to use your book on Tuesday, January 22.



THE GETAWAY —2019

The Getaway will be closed this week. We will reopen on January 22, 2019 with some amazing new menu items!

MONDAY, JANUARY 14

SCIENCE OLYMPIAD



Science Olympiad will meet on Mondays after school in B232. Join us!



MATH TEAM

Math Team will be practicing on Monday, January 14 in B126 after school. Be there or be square!

ECO-MINDED



Want to learn about the Environmental Issues and help make your community better? Come to Eco-Minded! We meet on Mondays in E161 at 2:30. All are welcome to join! Contact Ms. Savickas in the Science Office for any questions.



MOCK TRIAL

The Mock Trial practices are after school on Mondays and Wednesdays in Room B 200B from 2:45 to 4:30. Join us this Monday, January 14. See Mr. Sarmiento in the Special Ed department office, F245, if you have questions.

TUESDAY, JANUARY 15

EXAM SCHEDULE

Period 1 (exam)	7:30 AM - 9:10 AM
Period 2 (exam)	9:20 AM - 11:00 AM
Period 7 (exam)	11:10 AM - 12:50 PM

Buses Depart at 1:10 PM



ISO CHIPOTLE NIGHT

There will be a Saints ISO fundraiser at Chipotle on Tuesday, January 15, from 4:00-8:00 PM. Show the flyer (attached to this bulletin) or mention it to the cashier BEFORE you pay. Thanks for your support!

WEDNESDAY, JANUARY 16

EXAM SCHEDULE

Period 6 (exam)	7:30 AM - 9:10 AM
Period 3 (exam)	9:20 AM - 11:00 AM
Period 8 (exam)	11:10 AM - 12:50 PM

Buses Depart at 1:10 PM

THURSDAY, JANUARY 17

EXAM SCHEDULE

Make-Up Exam Time	7:30 AM - 9:10 AM
Period 4 (exam)	9:20 AM - 11:00 AM
Period 5 (exam)	11:10 AM - 12:50 PM

Buses Depart at 1:10 PM

FRIDAY, JANUARY 18

TEACHER WORK DAY

No School for Students





BASEBALL TRAINING OPPORTUNITIES

We are offer optional weekend training sessions to get our players prepared for the 2019 season and tryouts which begin on Monday, February 25. Training will be held at SPORTSPLEX 1400 Foundry Street (off of Dean Street) on Sundays: January 20, 27 and February 3, 10, 17, and 24. Training will be offered for Varsity and Sophomores players from 4:00-5:30 PM and for Freshman players from 5:30-7:00 PM. The cost is \$10 per session you attend. See Coach Asquini in Special Education Office if you have any questions.

TRACK

Official start day for both Track teams is January 28 at 2:45pm in the Sports Complex. Please make a notice to have students begin to register for the sport on our athletic site. Thanks!

SOFTBALL

Attention Saints—there will be a mandatory softball meeting for anyone interested in trying out for softball on Tuesday, January 22 after school from 2:40-3:00pm in the Little Theatre. Please email Coach Gutesha at jarod.gutesha@d303.org if you cannot attend.



SCHOOL SPIRIT TASTES GREAT



Make dinner a selfless act by joining us for a fundraiser to support St. Charles East Freshmen Student Council. Come in to the Chipotle at **3821 E Main Street** in St. Charles on **Saturday, January 12th** between **4:00pm** and **8:00pm**. Bring in this flyer, show it on your smartphone or tell the cashier you're supporting the cause to make sure that 33% of the proceeds will be donated to St. Charles East Freshmen Student Council.

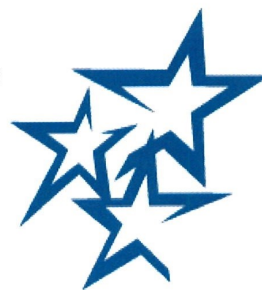
Approved for
Bulletin Boards
St. Charles East High School



Online orders will not be included in the fundraiser total. To ensure your purchase is counted in the fundraiser, be sure to order and pay in-restaurant. Gift card purchases during fundraisers do not count towards total donated sales, but purchases made with an existing gift card will count.



St. Charles East and North High Schools
Final Assessment Schedule
2018-2019



First Semester

Tuesday, January 15, 2019

Period 1 (exam)	7:30-9:10
Period 2 (exam)	9:20-11:00
Period 7 (exam)	11:10-12:50

- Buses Depart at 1:10 p.m.

Wednesday, January 16, 2019

Period 6 (exam)	7:30-9:10
Period 3 (exam)	9:20-11:00
Period 8 (exam)	11:10-12:50

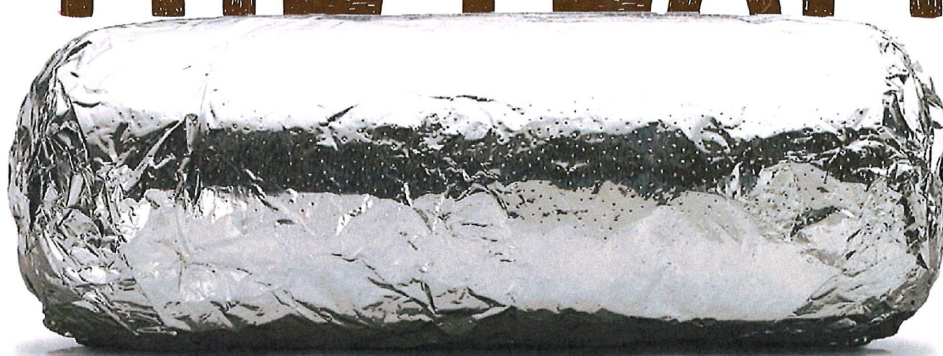
- Buses Depart at 1:10 p.m.

Thursday, January 17, 2019

Make-Up Exam Time	7:30-9:10
Period 4 (exam)	9:20-11:00
Period 5 (exam)	11:10-12:50

- Buses Depart at 1:10 p.m.

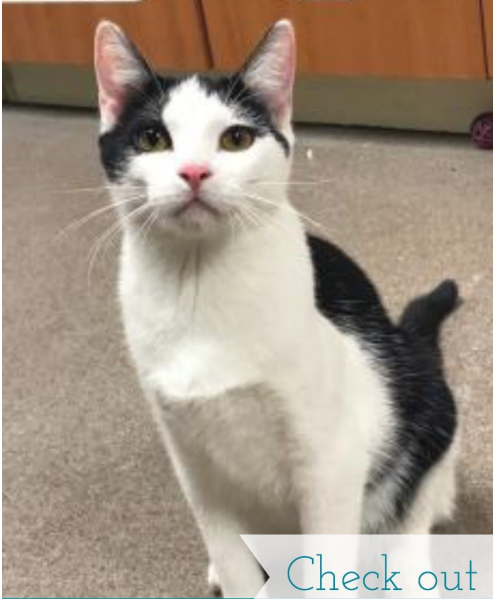
ONE FOR THE TEAM



Show your team spirit by joining us for a fundraiser to support St Charles East High School ISO-Special Olympics. Come in to the Chipotle at **3821 E Main Street** in St. Charles on **Tuesday, January 15th** between **4:00pm** and **8:00pm**. Bring in this flyer, show it on your smartphone or tell the cashier you're supporting the cause to make sure that 33% of the proceeds will be donated to St Charles East High School ISO-Special Olympics.



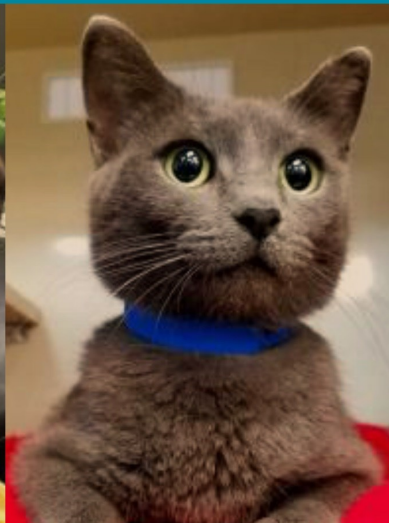
Online orders will not be included in the fundraiser total. To ensure your purchase is counted in the fundraiser, be sure to order and pay in-restaurant. Gift card purchases during fundraisers do not count towards total donated sales, but purchases made with an existing gift card will count.



Check out their wish-list and bring your donations to STCE!

Aid for Anderson Donation Drive

January
7th—17th



All of these adorable adoptees are available at Anderson Animal Shelter!

Anderson Animal Shelter's Wish-List

- Gift Cards to Petco, Petsmart, Pet Supplies Plus, or Sam's Club
- Dog-safe sidewalk snow salt (MUST be pet-safe!)
- Stuffing-less Plush Dog Toys
- Stainless Steel No-Tip Pet Food Bowls
- Kongs
- Pill Pockets (Large Dog)
- Treats (soft or moist only)
- Kitten Feeding Bottles
- Soft Paws or Soft Claws
- Nylabone Dog Bones
- Nylon Dog Leashes with Swivel Clip
- Pug Lyfe Harnesses for Dogs
- Midwest Folding Metal Dog Crate
- Adaptable Spray & Collars for Dogs
- Puppy Playpens (Metal)
- Paper Towels
- Gallons of Bleach
- Hand Sanitizer
- Frontline Plus for Cats or Dogs (Any Size)
- Newspaper (Shredded to 1-2 inch wide strips is immensely appreciated)
- Thermal Laminating Pouches (8.9 in x 11.4 in)

Please think about donating one (or more!) of these items to help support the animal shelter, ANYTHING is appreciated.

January

7th—17th

Bring donations to the boxes in the foyer, main commons and LRC



IHOP

Friday January 18, 2019

1:00pm-10:00pm

125 Smith Rd
St. Charles, IL

Donating Back: 20%



**Scan this QR code
and commit to dining
with us!**

**Bring this flyer with you or let your
server know you're supporting our
fundraiser!**

Any questions? Email nicole.johnson@d303.org!

TRADES, DISTRIBUTION, TRANSPORTATION & MANUFACTURING



**PANEL DISCUSSION WITH
INDUSTRY PROFESSIONALS**

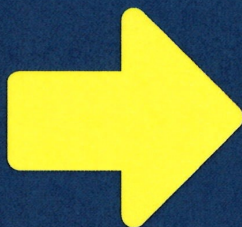


Thursday

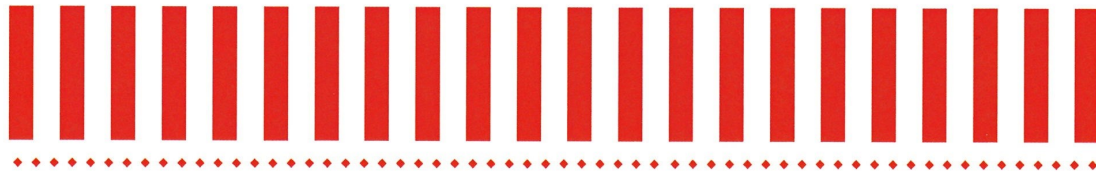
January, 24th 2019

Norris Cultural Arts Center

During 7th Hour



PASSES AVAILABLE IN COLLEGE & CAREER OFFICE



Portillo's **for GOOD**

FUNDRAISERS

Bring in this flyer or show it on your smartphone
and 20% of the proceeds will benefit

FEED MY STARVING CHILDREN - ST. CHARLES EAST HIGH SCHOOL

January 24, 2019

5:00pm - 8:00pm

at the Portillo's located at:

**3895 E. Main Street
St. Charles, IL 60174**

We look forward to seeing you there!

To learn more about how you can partner with us
to serve up a better tomorrow, visit
portillos.com/good



Not valid with online orders. Promoting on Portillo's premises is strictly prohibited.

Dear RYLA Chairman/Club President, School Administrator or Parent,

The Rotary Youth Leadership Awards (RYLA) Conference offers participants a choice to attend one of two weekends featuring the same program format and speakers. Session I will be March 7-10, 2019 and Session II will be April 4-7, 2019. Students from the same school may attend either weekend of their choosing. No two students will be in the same small group at the camp. This is intentional.

RYLA was established by Rotary International as a special award for young people, of high school age, who have displayed leadership skills or potential, as shown by their active participation in groups or services. Each student is from Rotary District 6440. Participants will be involved in a three day program held at Edwards Camp & Conference Center in East Troy, Wisconsin. We have exclusive use of the camp both weekends.

The three day program includes motivational and educational speakers from around the United States. One presenter is the greatest speaker I have ever witnessed or heard! We also have two best-selling authors joining us this year! The program will greatly enhance leadership skills through lectures, hands on activities, team leadership activities, and interaction with other student leaders from around the District.

The cost to Rotary Clubs is \$350 per student. This fee includes: coach bus transportation, to and from the conference, (there are eight different bus pick up and drop off locations per weekend) room and meals, speaker fees, staffing, night security, snacks, supplies, RYLA tee shirt, all photos and videos from the weekends will be uplinked to a private Facebook page. Students who attend RYLA are expected to speak at the sponsoring Rotary Club sometime within the following few months after their attendance.

Once the students have been selected/accepted by their sponsoring Rotary Club (or by their school), and I receive their approved application, I will send them an Acceptance Packet. Inside each packet is:

- Letter congratulating the student for being selected to attend RYLA
- List of what to bring/what not to bring to camp
- Expectations letter (behavior and participation)
- Transportation information document and memos
- Full agenda for the weekend conference
- Camp map and other basic information



All transportation issues and other individual special needs may be handled directly with me.

Every single participant (more than 3,000 over the last sixteen years) has rated the camp very high in terms of the experience. The average score over the last five years is an amazing 9.7 (out of 10), based on educational content and fun. Yes, fun is an element of this experience! This is both an educational experience as well as a reward for leadership skills already demonstrated. I can guarantee every person who attends, regardless of their intentions, leaves motivated, energized and better educated to lead! Need more information? Feel free to call me - anytime - at (630) 688-5165.



The logo for the RYA Youth Leadership Award (RYLA) is displayed. It features the letters 'RYLA' in a bold, green, sans-serif font. The 'Y' is replaced by a stylized figure of a person with arms raised, composed of a collage of many small, diverse human figures. Above the 'Y' is a bright yellow sun. To the right of the 'Y' is a yellow gear-like emblem with a black center containing a white 'Y' and the text 'RYA' and 'LEADERSHIP'.

- OVER -

ROTARY YOUTH LEADERSHIP AWARDS (RYLA) CONFERENCE

Rotary District 6440 - 2019 Application Form



BACKGROUND INFORMATION: (Use additional sheet of paper if necessary)

What leadership positions have you held? Give your group or organization name, positions held and dates.

STUDENT ESSAY:

Attach to this application a short essay, no more than 500 words, on the importance of youth leadership in society.

RECOMMENDATION:

This certifies that we recommend the above student and understand that, if selected, this student will attend the Rotary Youth Leadership Awards (RYLA) conference held at Camp Edwards in East Troy, WI. The Conference will begin on Thursday evening and continue through Sunday afternoon on the weekends of March 7-10, 2019 or April 4-7, 2019 of the weekend selected.

Principal or Authorized School Signature & Date

Counselor Signature and Date

STUDENT AGREEMENT:

If I am selected to attend the Rotary Youth Leadership Awards (RYLA) Conference, I agree to abide by all rules and regulations established by the sponsors, and I will strive to contribute my best effort toward the success of the program.

Student Signature

Date

Parent Signature

Date

PLEASE NOTE: The following is to be completed by the sponsoring Rotary Club

RETURN THIS COMPLETED APPLICATION TO:

RYLA District Chairman, Sean Nelson, 2s361 Milton Avenue, Glen Ellyn, IL. 60137

This application must include a check, payable to Rotary District 6440, in the amount of \$350

Sponsoring Rotary Club _____

Club Chairman _____

Address _____ City _____