



District Satisfaction Survey Students, Parents, and Staff

January 2017

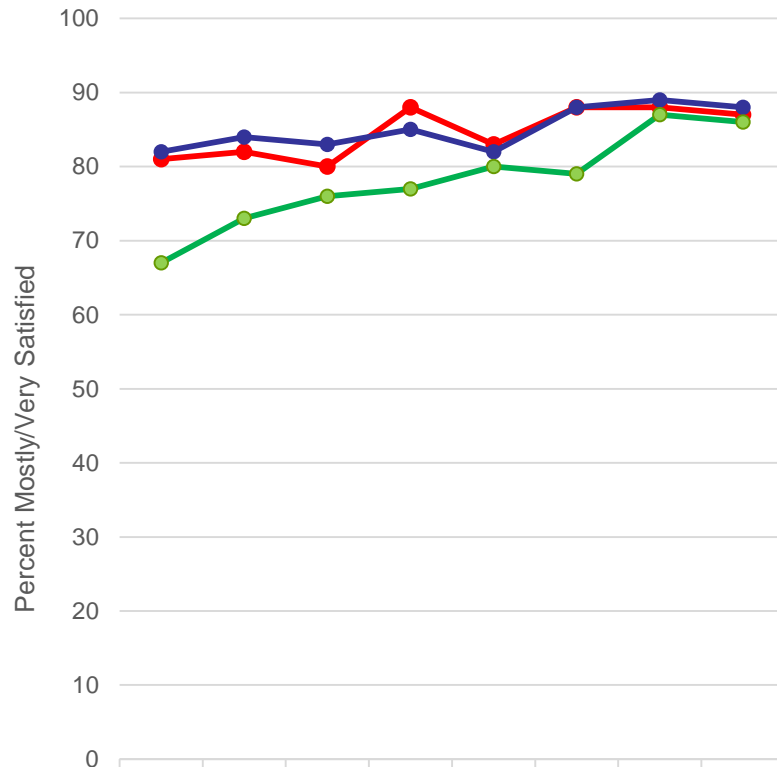
Survey Program, January 2017

Number of Respondents

<i>Respondents</i>	<i>Schools</i>			<i>TOTAL</i>
	Elementary	Middle	High	
Staff	350	165	297	812
Parent	1233	724	764	2721
Student	2211	2783	3323	8317
<i>TOTAL</i>	3794	3672	4384	11,850

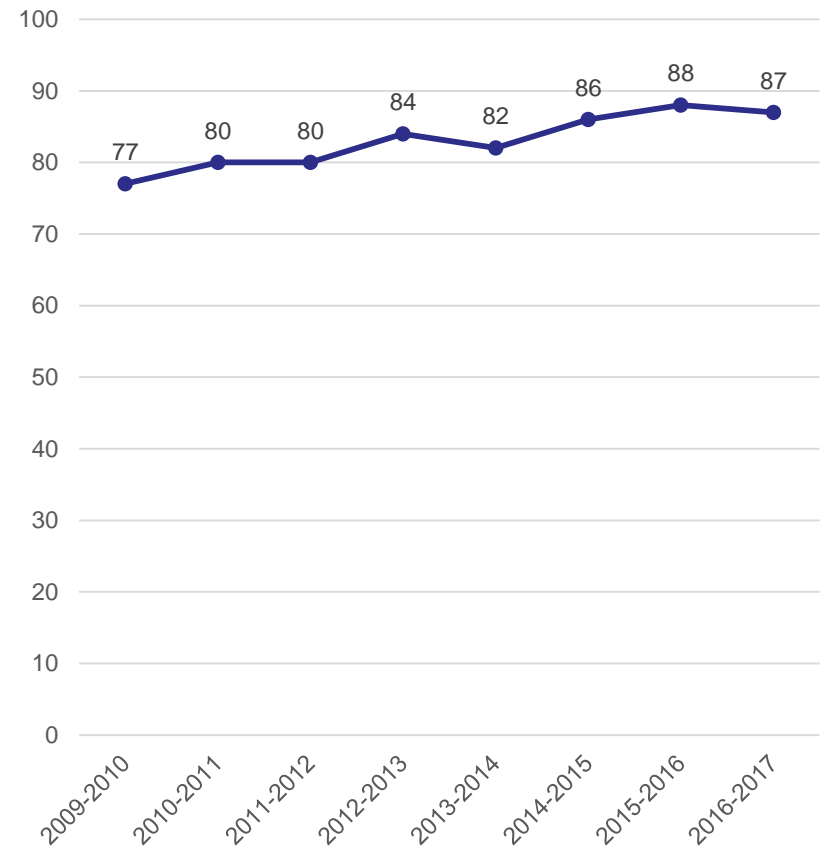
Overall Parent Satisfaction

What is your overall satisfaction with your child's school?



	2009-10	2010-11	2011-12	2012-13	2013-14	2014-15	2015-16	2016-17
Elementary	81	82	80	88	83	88	88	87
Middle	82	84	83	85	82	88	89	88
High School	67	73	76	77	80	79	87	86

District



Scale: **Very Satisfied**, **Mostly Satisfied**, Moderately Satisfied, Slightly Satisfied, Not at All Satisfied

Parent Survey “Grades”

All things considered, what “grade” would you give to District 303 in the following areas?

	2009	2010	2011	2012	2013	2014	2015	2016	2017
Teachers	4.26	4.31	4.38	4.38	4.46	4.46	4.51	4.61	4.62
Your School	3.90	4.01	4.08	4.07	4.24	4.17	4.29	4.39	4.38
Curriculum	3.79	3.98	4.01	4.07	4.22	4.09	4.11	4.31	4.30
Buildings	3.66	3.95	3.98	4.09	4.21	4.18	4.32	4.35	4.33
Central Admin	3.54	3.65	3.82	3.81	4.04	3.96	4.08	4.09	4.18
Superintendent	3.60	3.60	3.77	3.65	3.87	3.65	3.90	3.81	4.00
Board of Ed	3.33	3.52	3.69	3.62	3.87	3.76	3.92	3.89	3.98

Green = All time high

Scale	1.00	2.00	3.00	4.00	5.00
Grade	F	D	C	B	A

Parent Satisfaction with Selected Programs

How satisfied are you with the education or experience your child is receiving in the following areas?

	2009	2010	2011	2012	2013	2014	2015	2016	2017
English	3.75	3.96	3.99	3.99	4.13	4.08	4.14	4.30	4.31
Math	3.76	3.90	3.93	3.95	4.03	4.02	4.00	4.21	4.25
*Reading	3.98	4.10	4.14	4.16	4.27	4.17	4.23	4.33	4.42
Science	3.79	3.93	3.99	3.94	4.05	4.02	4.10	4.26	4.22
Social Studies	3.84	3.95	4.02	4.02	4.13	4.11	4.13	4.30	4.33
Special Ed.	3.69	3.76	3.92	3.88	4.06	4.03	4.26	4.28	4.29
Gifted	2.81	3.54	3.51	3.72	3.77	3.76	3.90	4.08	4.15
Art	NR	4.07	4.01	4.03	4.12	4.11	4.19	4.23	4.37
Music	NR	4.15	4.18	4.23	4.36	4.31	4.38	4.39	4.45
PE	3.98	4.12	4.11	4.12	4.24	4.24	4.27	4.36	4.39
LRC	NR	4.01	4.00	4.06	4.20	4.14	4.21	4.33	4.40

NR = Not Reported

*Reading is ES and MS only

Green = All time high

Parent Satisfaction with Selected Programs

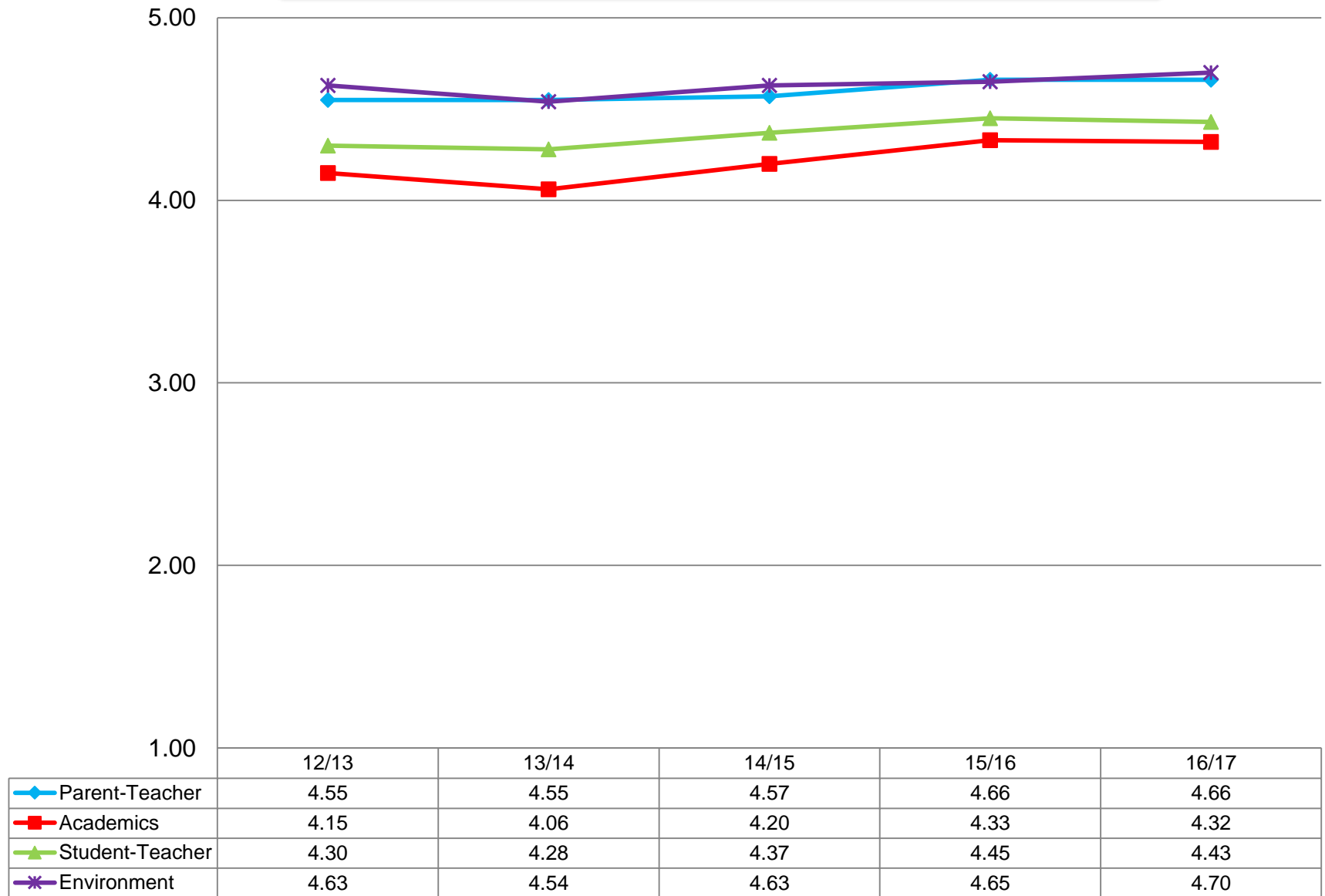
	2009	2010	2011	2012	2013	2014	2015	2016	2017
Business Ed*	NR	3.62	3.70	3.74	3.86	3.89	4.19	4.05	4.19
Family & Consumer Sci.*	NR	3.67	3.77	3.87	4.01	4.02	4.20	4.17	4.17
Guidance*	NR	2.91	3.13	3.18	3.25	3.29	3.39	3.73	3.86
Food Services	3.27	3.50	3.47	3.37	3.44	3.41	3.22	3.44	3.63
Transportation	3.73	3.98	3.88	3.91	4.10	4.01	4.03	4.17	4.23

* Includes High school only

NR = Not Reported

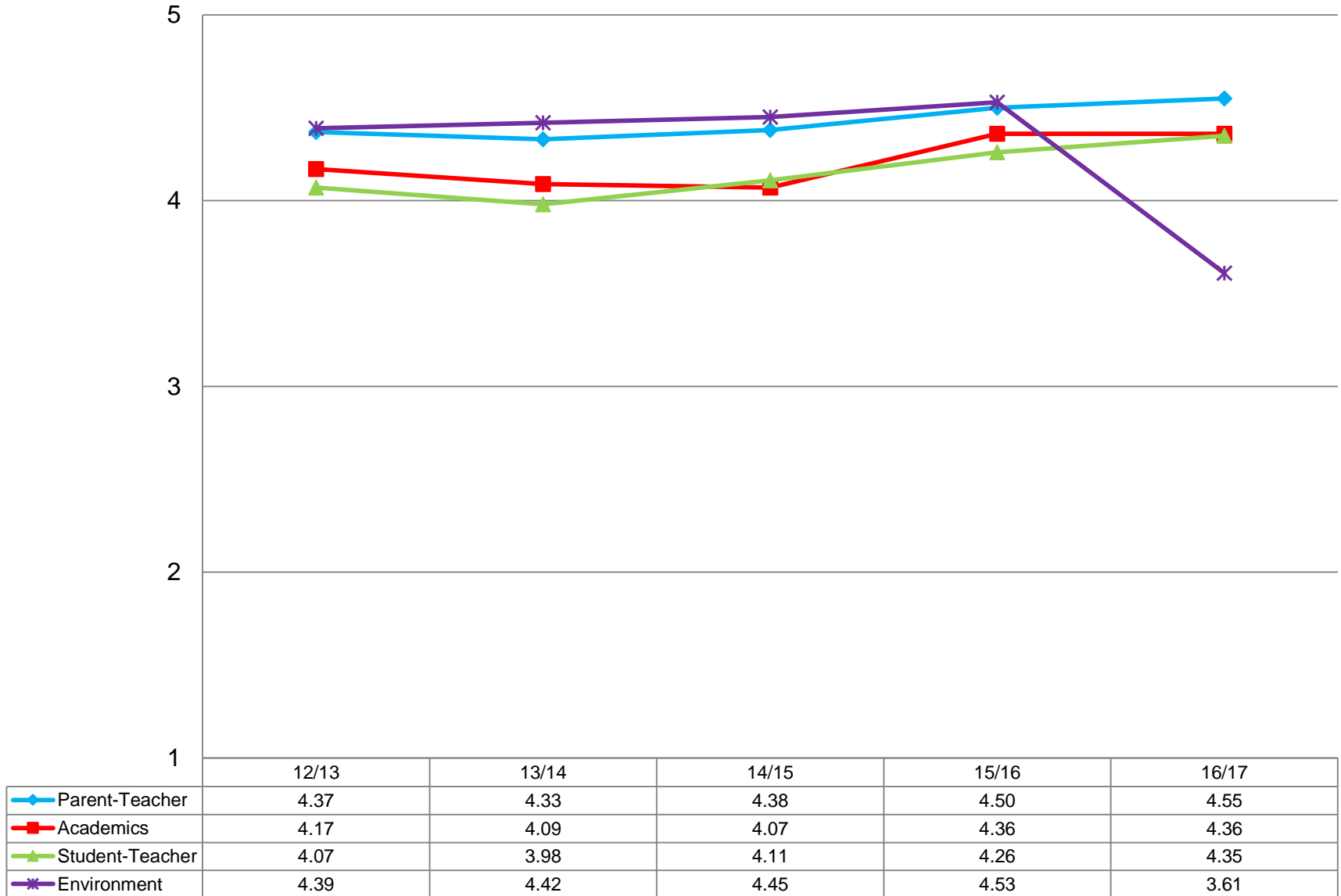
Green = All time high

Elementary School Parent Summary



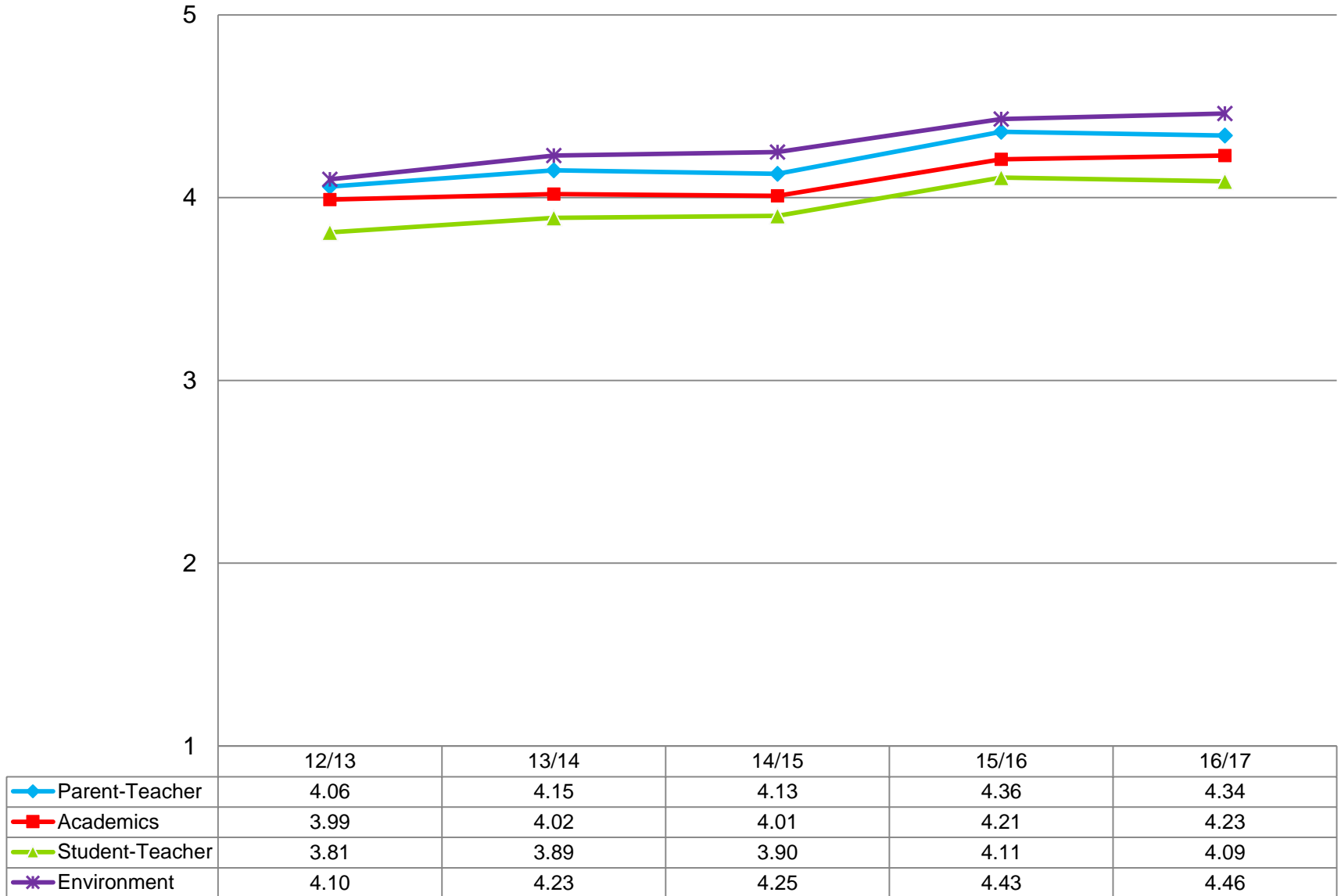
All factors are on a 5 point scale.

Middle School Parent Summary



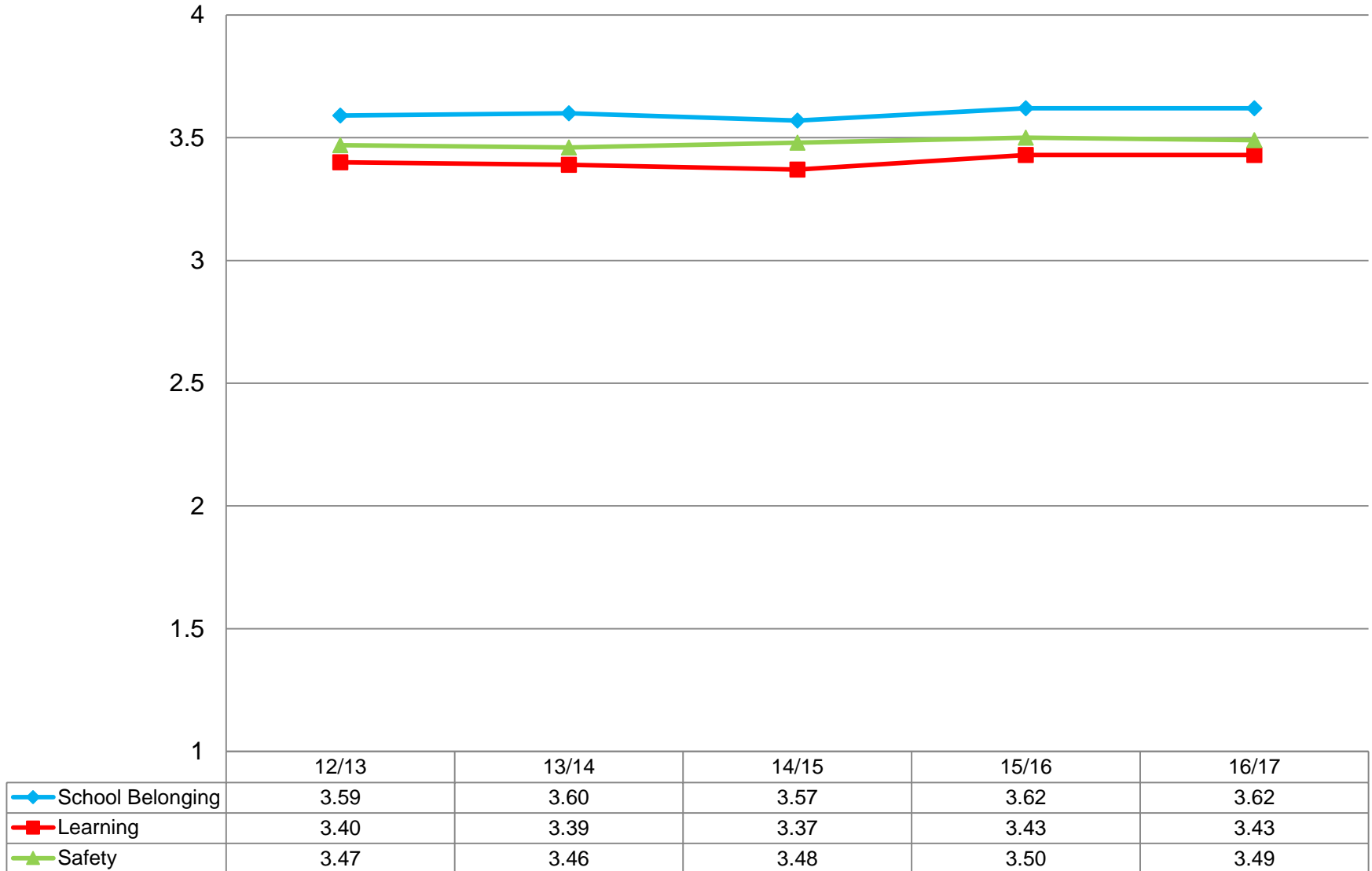
All factors are on a 5 point scale.

High School Parent Summary



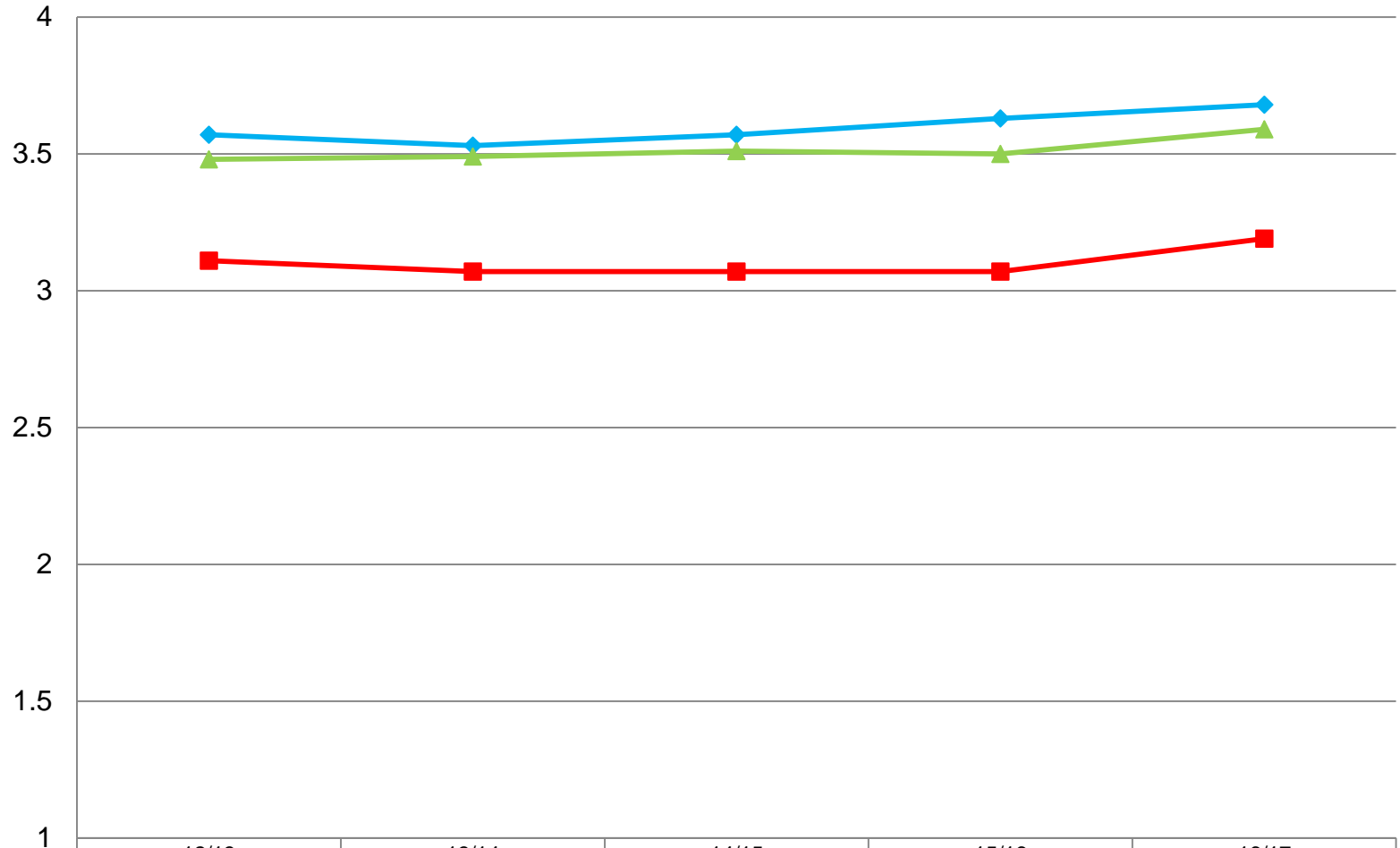
All factors are on a 5 point scale.

Elementary School Student Summary



All factors are on a 4 point scale.

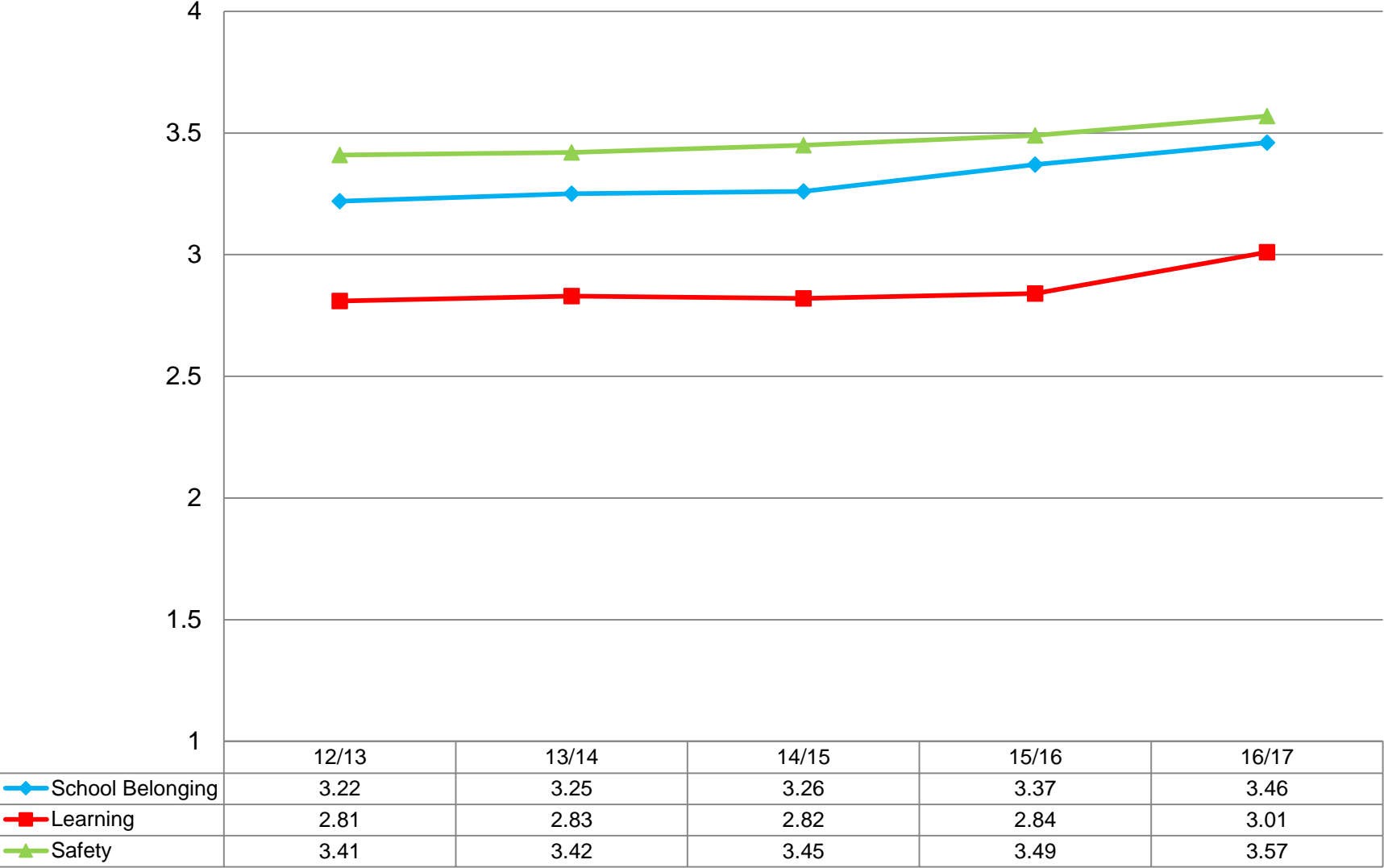
Middle School Student Summary



	12/13	13/14	14/15	15/16	16/17
School Belonging	3.57	3.53	3.57	3.63	3.68
Learning	3.11	3.07	3.07	3.07	3.19
Safety	3.48	3.49	3.51	3.50	3.59

All factors are on a 4 point scale.

High School Student Summary



All factors are on a 4 point scale.

Staff Summary

- 2016 Staff Survey feedback challenged the relevance of many of the survey questions with how schools operate today.
- Principals met with staff for input on updating the questions. 15 of the 30 questions as well as the scale were updated. The SCEA then provided feedback and the result is the survey we used this year.
- Because of the changes we are in a baseline year.

Leadership

Each Factor is made up of many questions.

Updates are in **Red**.

Factor – Leadership

Scale – 5=Strongly Agree; 4=Agree; 3=Somewhat Agree or Disagree; 2=Disagree; 1=Strongly Disagree

Scale – 4=Strongly Agree; 3=Agree; 2=Disagree; 1=Strongly Disagree; Null=DNA

- | | | |
|-------|----|---|
| Item: | 3a | The principal is committed to shared decision making.
The principal is committed to professional collaboration. |
| | 3b | The principal is a strong leader in school improvement.
The principal ensures all staff engage in school improvement activities. |
| | 3c | The principal ensures that student learning is the “bottom line.”
The principal ensures that student learning is the primary school focus. |
| | 3d | The principal sets high standards of performance. |
| | 3e | I feel supported by my principal.
The principal takes an active role in understanding my work. |
| | | My school principal... |
| | 5a | treats all staff equally and fairly.
treats all staff fairly. |
| | 5b | promotes parental and community involvement.
promotes parental and community involvement in this school. |
| | 5c | takes interest in professional development of teachers.
values professional development of teachers. |
| | 5d | takes active role in resolving conflicts fairly and quickly.
takes a positive and active role in resolving conflicts with the staff fairly and quickly when needed. |

Shared Decision Making

Each Factor is made up of many questions.
Updates are in **Red**.

Factor – Shared Decision Making

Scale – 5=Strongly Agree; 4=Agree; 3=Somewhat Agree or Disagree; 2=Disagree; 1=Strongly Disagree

Scale – 4=Strongly Agree/Most; 3=Agree/Many; 2=Disagree/Some; 1=Strongly Disagree/Few; Null=DNA

Item: 4f Teachers at my school...
take an active role in school-wide decision making.
have opportunities to take an active role in school-wide decision making.

Scale – 4=A Great Deal of Influence; 3=Some Influence; 2=Very Little Influence; 1=No Influence

- How much actual influence do you think staff members have over school policy
AT THIS SCHOOL in each of the following areas?
- 6a staff influence in setting discipline policy
Creating school climate.
 - 6b staff influence in determining professional development
Staff members have input on the content of in-service professional development programs.
 - 6c staff influence in hiring new teachers
On-boarding new staff.
 - 6d staff influence in deciding how budget is spent
Staff members are involved in deciding how school discretionary monies are spent.

Collaboration

Each Factor is made up of many questions.

Updates are in Red.

Factor – Collaboration

Scale – 5=Almost daily; 4=Once or twice a week; 3=Once or twice a month; 2=A few times a year; 1=Never

Scale – 4=Almost daily; 3=Once or twice a week; 2=Once or twice a month; 1=A few times a year; 0=Never

		Please enter the frequency with which you do each of the following.
Item:	8a	analyze student work with other teachers
	8b	analyze student performance data
	8c	discuss lessons that were successful
	8d	discuss lessons that were not successful
	8e	discuss beliefs about teaching and learning
	8f	discuss how to help students having problems
	8g	work together to develop teaching materials or activities for particular classes
	8h	discuss and attempt to solve programs - or school-level problems
		Collaborate to accomplish school improvement goals.

Climate

Each Factor is made up of many questions.

Updates are in **Red**.

Factor – Climate

Scale – 5=Strongly Agree; 4=Agree; 3=Somewhat Agree or Disagree; 2=Disagree; 1=Strongly Disagree

Scale – 4=Strongly Agree; 3=Agree; 2=Disagree; 1=Strongly Disagree; Null=DNA

To what extent do you agree or disagree with each of the following statements about General school climate?

Item: 3f I feel supported by my colleagues.

3g The staff is committed to helping students learn.

3h The staff has a process for solving problems.

The staff has an effective process for making group decisions.

Scale – 5=Strongly Agree; 4=Agree; 3=Somewhat Agree or Disagree; 2=Disagree; 1=Strongly Disagree

Scale – 4=Strongly Agree/Most; 3=Agree/Many; 2=Disagree/Some; 1=Strongly Disagree/Few; Null=DNA

4a Teachers at my school are continually learning and seeking new ideas.

4b Teachers at my school are encouraged to try new methods of instruction.

4c Teachers at my school trust each other.

4d Teachers at my school feel responsible to help each other do their best.

4e Teachers at my school share ideas and teaching practices.

Staff Survey Results

	Elementary	Middle School	High School
Leadership	3.25	3.37	3.55
Shared Decision Making	2.97	3.09	3.11
Collaboration	2.97	2.83	3.02
Climate	3.34	3.30	3.38

