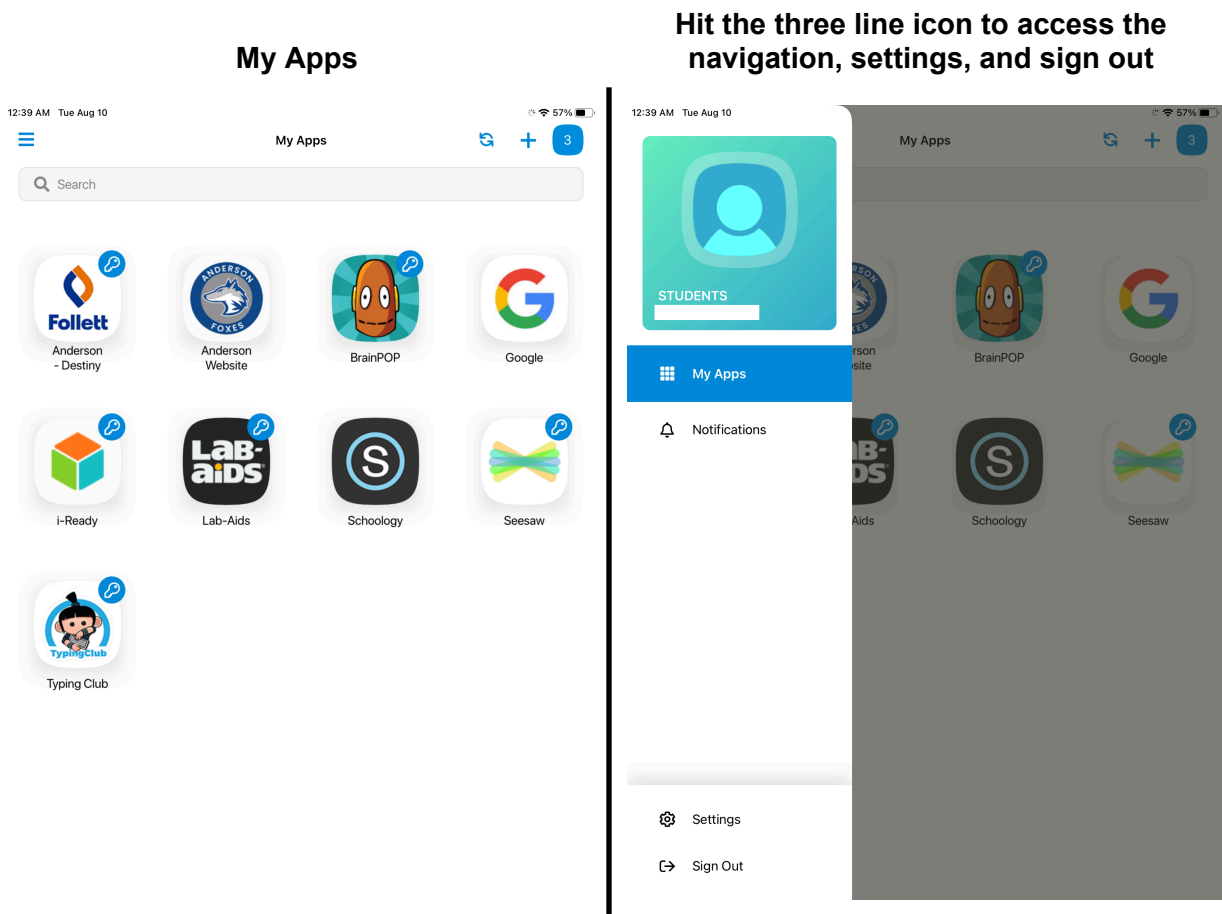
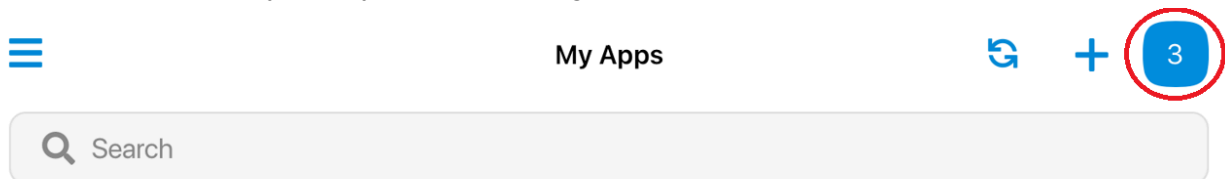


After Logging into ClassLink on the iPad with the ClassLink app, you will arrive at the My Apps dashboard.

****If you use Seesaw, you will not be able to log in through the Seesaw iOS app. You will need to click on the Seesaw icon within the ClassLink app to log in first, and then it will automatically open the Seesaw iOS app.**



You can see how many apps you have running from here:



If you would like to see what's running, or close out of any apps, select the number icon to bring up this next menu. In here, clicking on "Edit" will allow you to close out any apps.

